



Hunstanton Heritage Gardens

Laura Hampshire – Regeneration Projects
Officer



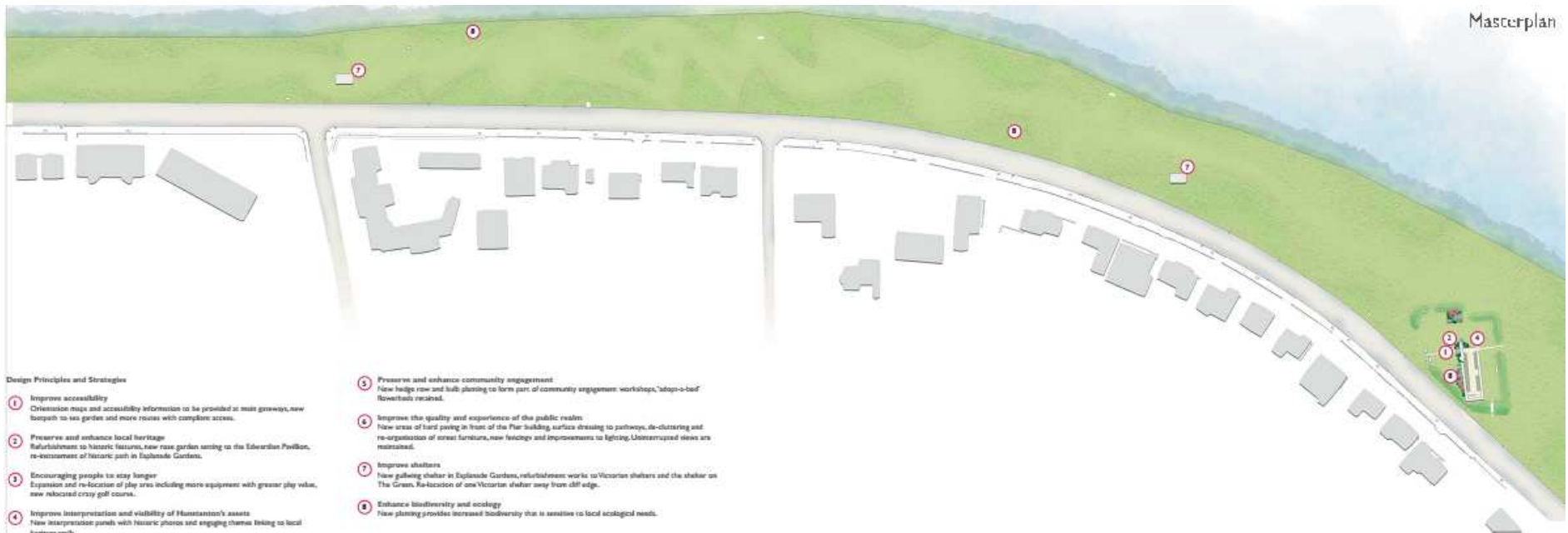
Masterplan



Design Principles and Strategies

- 1 Improve accessibility**
Orientation maps and accessibility information to be provided at main gateways, new pathways to sea garden and more routes with compliant access.
- 2 Preserve and enhance local heritage**
Refurbishment to historic features, new rose garden sitting to the Edwardian Pavilion, re-measurement of historic path in Elysian Gardens.
- 3 Encouraging people to stay longer**
Expansion and re-location of play area including more equipment with greater play value, new reimagined crazy golf course.
- 4 Improve interpretation and visibility of Hainteston's assets**
New interpretation panels with historic photos and engaging themes linking to local heritage trails.
- 5 Preserve and enhance community engagement**
New hedge row and bulb planting to form part of community engagement workshops, 'adopt-a-bed' flowerbeds retained.
- 6 Improve the quality and experience of the public realm**
New areas of hard paving in front of the Pier building, surface dressing to pavements, de-cluttering and re-organisation of street furniture, new landscaping and improvements to lighting. Unsurpassed views are maintained.
- 7 Improve shelters**
New gulling shelter in Elysian Gardens, refurbishment works to Victorian shelters and the shelter on The Green.
- 8 Enhance biodiversity and ecology**
New planting provides increased biodiversity that is sensitive to local ecological needs.





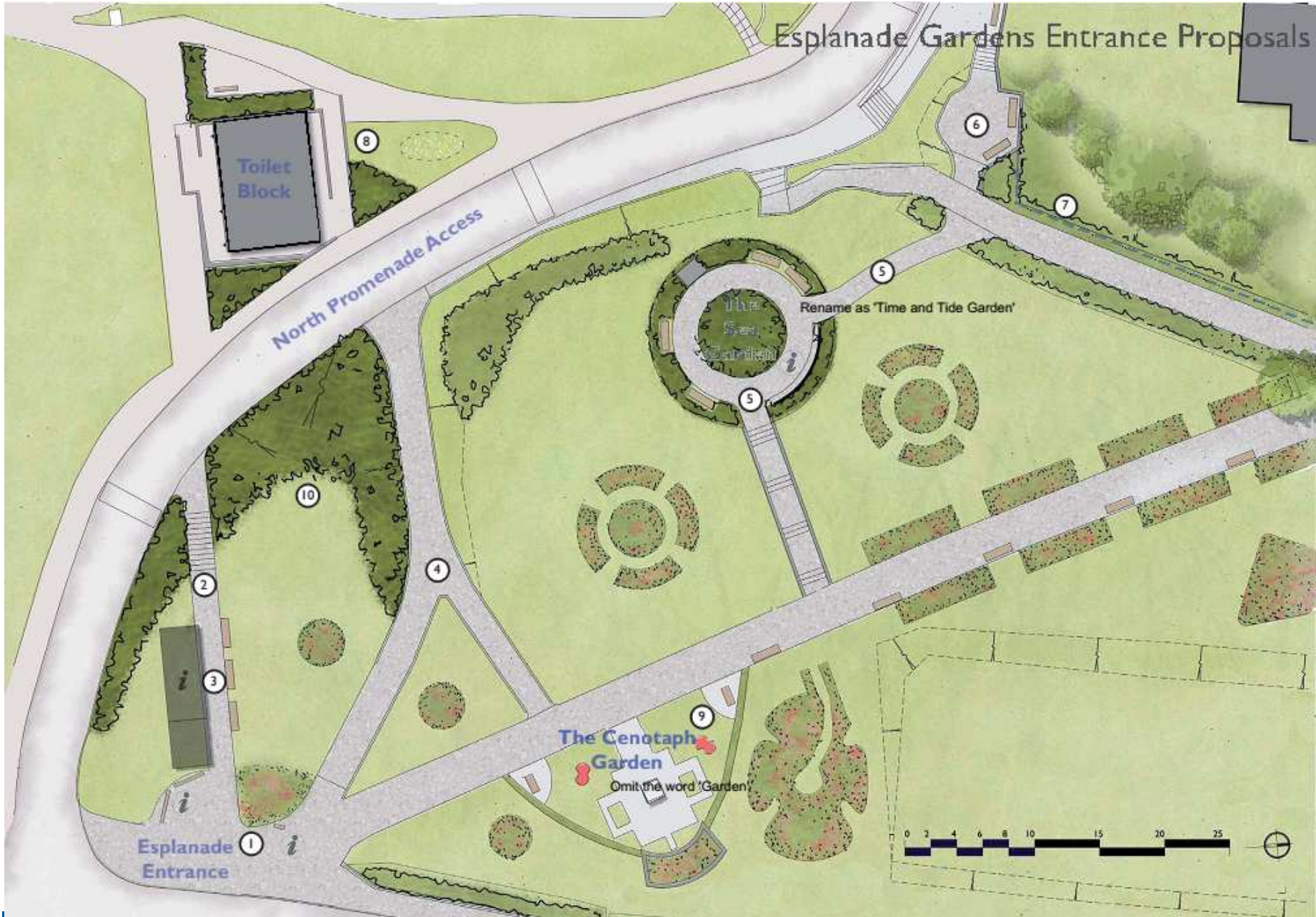
Design Principles and Strategies

- 1 **Improve accessibility**
Orientation maps and accessibility information to be provided at main gateways, new footpath to sea garden and more routes with complete access.
- 2 **Preserve and enhance local heritage**
Re-establishment of historic features, new rose garden facing to the Edwardian Pavilion, re-estabishment of historic path in Explorade Gardens.
- 3 **Encouraging people to stay longer**
Expansion and re-location of play area including more equipment with greater play value, new relocated crazy golf course.
- 4 **Improve interpretation and visibility of Hunstanton's assets**
New interpretation panels with historic photos and engaging themes linking to local...
- 5 **Preserve and enhance community engagement**
New hedge row and bulb planting to form part of community engagement workshops, 'adopt-a-hed' flowerbeds retained.
- 6 **Improve the quality and experience of the public realm**
New areas of hard paving in front of the Pier building, surface dressing to pathways, re-clustering and re-organisation of street furniture, new benches and improvements to lighting. Unobscured views are maintained.
- 7 **Improve shelters**
New gullwing shelter in Explorade Gardens, refurbishment works to Victorian shelters and the shelter on The Green. Re-location of one Victorian shelter away from cliff edge.
- 8 **Enhance biodiversity and ecology**
New planting provides increased biodiversity that is sensitive to local ecological needs.

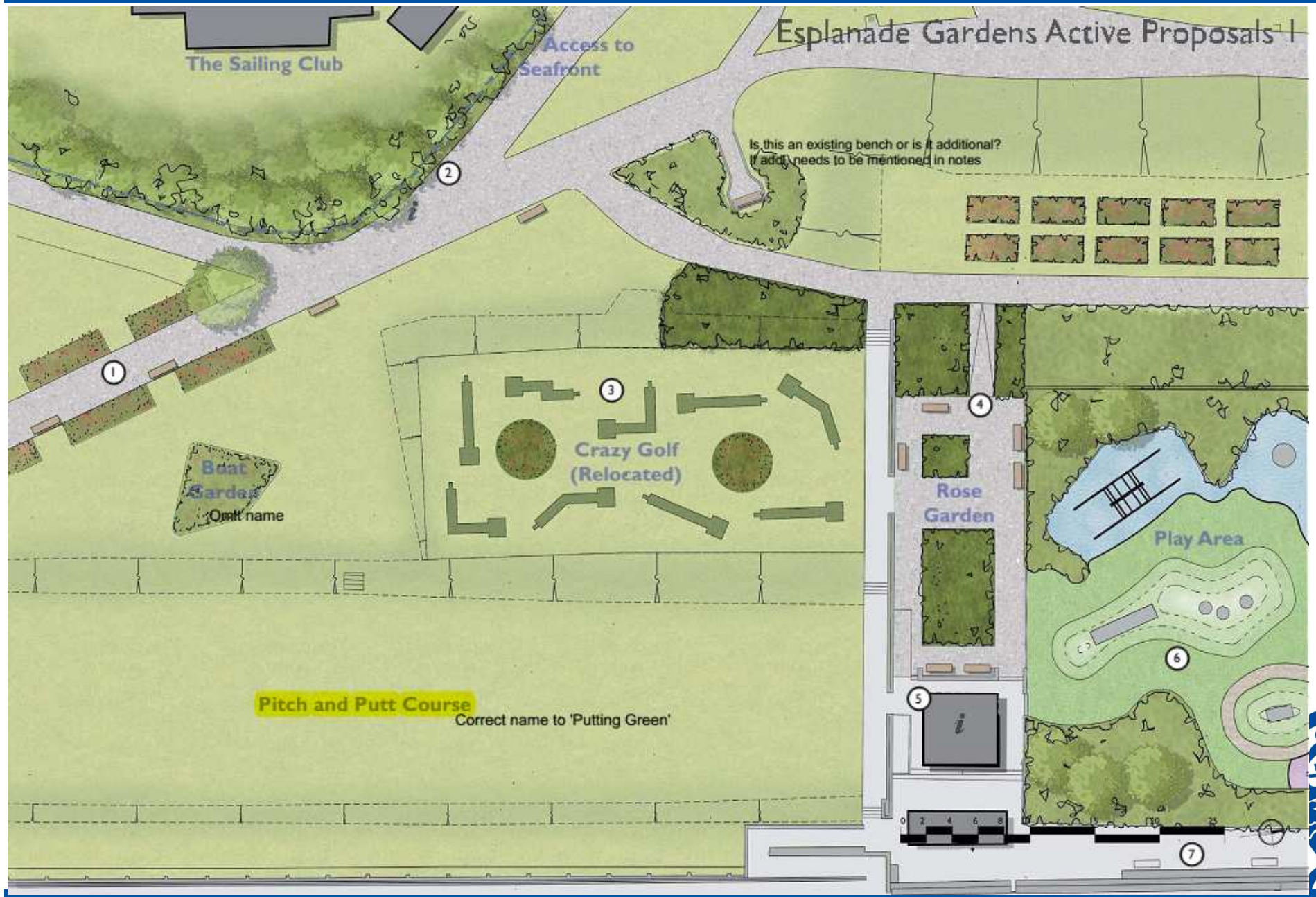


The Green Proposals



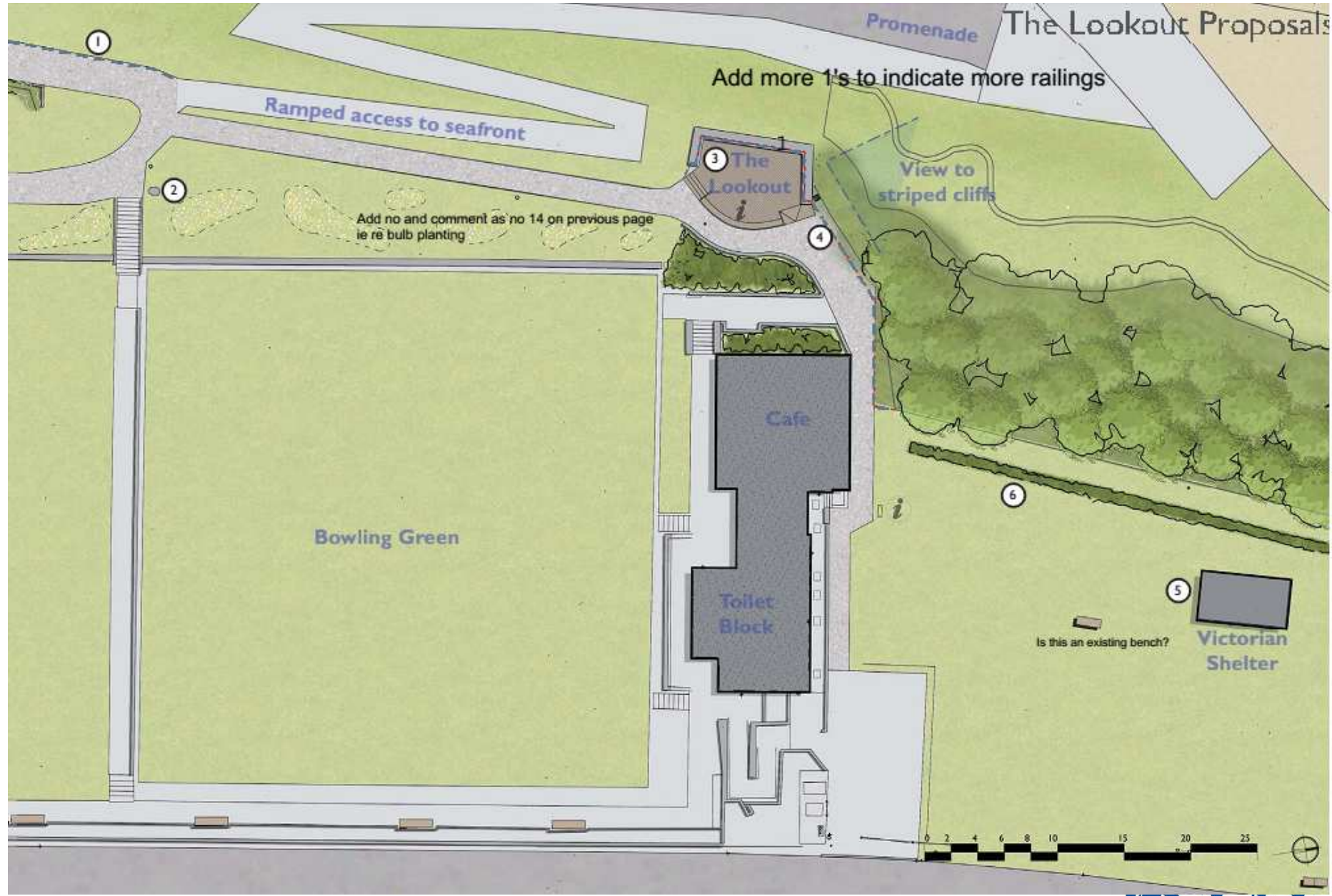


Esplanade Gardens Active Proposals



Esplanade Gardens Active Proposals 12





St. Edmund's Chapel Ruins Proposals

Note: Victorian shelters North and Middle refurbished in accordance with sections 3.2 and 3.3 Conditions Survey.

